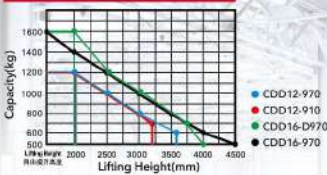


HELI
LIFTING THE FUTURE

24 YEARS TOP 1 FORK LIFT MANUFACTURER AND SALES IN CHINA FOR CONSECUTIVE 24 YEARS

Load Curve



CDD12/16

1.2-1.6 Ton Counterbalanced Electric Stacker
Lifting Height: 1400-4500mm

Advantages

Configuration and Performance

- Electronic power steering system, light and low noise.
- Two-way magnetic valve, three drop speed mode.
- AC Driving system, No carbon brush, maintenance free.
- USA CURTIS driving controller.
- Electromagnetic, regenerative braking system.
- Automatic lifting limit, proximity switch, long life.

Safety

- Curve automatic deceleration devices, more safe.
- Vehicle decelerates automatically at higher position.
- Stepless speed control system, safe and quiet.
- Controller with Multiple automatic protection.
- Emergency reversing device/Emergency brake switch.
- High position automatic reduction device.



AC | EPS

Free-maintained battery

Options fork tilt device

Counter-balanced electric stacker

Type	Lift height (mm)	Mast type	Option
CDD12-970	1400/2000/2500/3000/3300/3600	Standard 2-STAGE	TILTING DEVICE
CDD12-910	2500/3000/3300	FULL FREE 2-STAGE	-
CDD16-D970	1400/2000/2500/3000/3300/3600/4000	Standard 2-STAGE	TILTING DEVICE
CDD16-970	3700/3900/4200/4500	FULL FREE 3-STAGE	TILTING DEVICE

HELI CDD12/16

Feature	CDD12	CDD12	CDD16	CDD16
Model	970	910	D970	970
Configuration No.	970	910	D970	970
Type	Counterbalanced			
Mast type	Standard 2-Stage	Full free 2-Stage	Standard 2-Stage	Full free 3-Stage
Load capacity	kg 1200	1200	1600	1600
Load center	mm 500	500	500	500
Wheel base	mm 1179	1179	1529	1529
Operating type	Walkie/Stand On			
Wheels				
Wheels type	PU	PU	PU	PU
Wheel quantity/Driving wheel/ Balance wheel/Bearing wheel	1/0/2	1/0/2	1/0/2	1/0/2
Dimension				
Standard lift height	mm 1400/2000/2500/ 3000/3300/3600	2500/3000/3300	1400/2000/2500/3000/ 3300/3600/4000	3700/3900/4200/4500
Lowered fork height	mm 55	55	55	55
Fork size(length/width/thickness)	mm 1070/100/40	1070/100/40	1070/100/40	1070/100/40
Overall length	mm 2502/3012	2502/3012	2942/3362	2942/3362
Overall width	mm 1015	1015	1015	1015
Max.extend height	mm 2400/3000/3500/ 4000/4300/4600	3100/3600/3900	2400/3000/3500/4000/ 4300/4600/5000	4350/4550/4650/5150
Mast lowered height	mm 1220/1580/1780/ 2010/2130/2300	1630/2080/2180	1220/1580/1780/2030/ 2130/2330/2545	1817/1917/2002/2102
Min.Turning radius	mm 1352/1852	1352/1852	1808/2200	1808/2200
Min.Aisle width for pallets 800*1200	mm 2685/3175	2685/3175	3140/3520	3140/3520
Min.Aisle width for pallets 1000*1200	mm 2715/3195	2715/3195	3160/3538	3160/3538
Min.ground clearance	mm 80	80	80	80
Performance				
Travel speed,laden/unladen	km/h 5/5	5/5	5/5	5/5
Lift speed,laden/unladen	mm/s 130/230	130/230	130/230	130/230
Lowering speed,laden/unladen	mm/s 130/230	130/230	130/230	130/230
Gradeability,laden/unladen	% 5/7	5/7	5/7	5/7
Electrical configuration				
Drive motor/Lift motor/Steering motor	kW AC1.5/DC3/DC0.15	AC1.5/DC3/DC0.15	AC1.5/DC3/DC0.15	AC1.5/DC3/DC0.15
Battery voltage	V 24	24	24	24
Battery capacity	Ah 270	270	270	270
Brake	Electromagnetic/Regenerative			
Controller	CURTIS			
Weight				
Battery weight	kg 245	245	245	245
Service weight with battery	kg 1800	1930	2060	2100

* Details of specifications and equipment are based on information available at time of printing and may change without notice.



ANHUI HELI INDUSTRIAL VEHICLE IMP. AND EXP. CO., LTD.

ADD: 666 FANGXING ROAD, HEFEI, ANHUI, CHINA
TEL: +8655163639068
FAX: +8655163639966
Email: heli@helichina.net
WEBSITE: WWW.HELICHINA.COM / WWW.HELICHINA.NET

© 2015 heli copyright

Catalog No.2015.04 HELI Print